



## TEST REPORT

Applicant : DUCKSUNG HITECH CO., LTD.  
Address : #225-2, Shinneung-ri, Seoun-myeon, Anseong-si,  
Gyeonggi-do, Korea

Page: 1 of 4

Report No. RT12R-U0024-012-E

Date: Jan. 17, 2012

Sample Description : The following submitted sample(s) said to be:-

Name/Type of Product : Acetate Adhesive Tape□  
Sample ID No. : RT12R-U0024-012  
Item No. : DTS-232F  
Manufacturer/Vender : DUCKSUNG HITECH CO., LTD.

Sample received : Jan. 07, 2012  
Testing Date : Jan. 07, 2012 ~ Jan. 17, 2012  
Testing Environment : Temperature : ( 24 ± 2 ) °C, Humidity : ( 60 ± 5 ) % R.H.

Test Method(s) : Please see the following page(s).  
Test Result(s) : Please see the following page(s).

\* Note 1 : The test results presented in this report relate only to the object tested.

\* Note 2 : This report shall not be reproduced except in full without the written approval of the testing laboratory.

\* Note 3 : The item no. is assigned by client and indicated according to their requirement and guarantee letter.

Approved by,

E.Y.Lee / Lab. Technical Manager

Authorized by,

H.W.Yoo / Lab. General Manager

This Test Report is issued by the Company subject to its Terms and Conditions of Business printed overleaf. Attention is drawn to the limitations of liability, indemnification and jurisdictional issues defined therein. This Test Report shall not be reproduced, except in full, without prior written consent of the Company.

Intertek Testing Services Korea Ltd.

Seoul Office: Tel : 02-6090-9500 Fax : 02-3409-0026 Daegu Office : Tel : 053-600-8647 Fax : 053-600-8645 Web Site : [www.Intertek.co.kr](http://www.Intertek.co.kr)

Seoul Lab. Address : 1/F, A-ju Digital Tower, #284-56, Seongsu 2-ga, Seongdong-Gu, Seoul, 133-833 Korea

Ulsan Lab. Address : #340-2, Yongam-Ri, Chongryang-Myun, Ulju-Gun, Ulsan 689-865 Korea



# TEST REPORT

Page: 2 of 4  
Date: Jan. 17, 2012

Report No. RT12R-U0024-012-E

Sample ID No. : RT12R-U0024-012  
Sample Description : Acetate Adhesive Tape

Test Item	Unit	Test Method	MDL	Result
Cadmium (Cd)	mg/kg	With reference to US EPA 3052, by acid digestion and determined by ICP-OES	0.5	N.D.
Lead (Pb)	mg/kg	With reference to US EPA 3052, by acid digestion and determined by ICP-OES	5	15
Mercury (Hg)	mg/kg	With reference to US EPA 3052, by acid digestion and determined by ICP-OES	2	N.D.
Hexavalent Chromium (Cr <sup>6+</sup> )	mg/kg	With reference to US EPA 3060A and determined by UV-VIS Spectrophotometer	1	N.D.
Polybrominated Biphenyl (PBBs)				
Monobromobiphenyl	mg/kg	With reference to US EPA 3540C, by solvent extraction and determined by GC/MS	5	N.D.
Dibromobiphenyl	mg/kg		5	N.D.
Tribromobiphenyl	mg/kg		5	N.D.
Tetrabromobiphenyl	mg/kg		5	N.D.
Pentabromobiphenyl	mg/kg		5	N.D.
Hexabromobiphenyl	mg/kg		5	N.D.
Heptabromobiphenyl	mg/kg		5	N.D.
Octabromobiphenyl	mg/kg		5	N.D.
Nonabromobiphenyl	mg/kg		5	N.D.
Decabromobiphenyl	mg/kg		5	N.D.
Polybrominated Diphenyl Ether (PBDEs)				
Monobromodiphenyl ether	mg/kg	With reference to US EPA 3540C, by solvent extraction and determined by GC/MS	5	N.D.
Dibromodiphenyl ether	mg/kg		5	N.D.
Tribromodiphenyl ether	mg/kg		5	N.D.
Tetrabromodiphenyl ether	mg/kg		5	N.D.
Pentabromodiphenyl ether	mg/kg		5	N.D.
Hexabromodiphenyl ether	mg/kg		5	N.D.
Heptabromodiphenyl ether	mg/kg		5	N.D.
Octabromodiphenyl ether	mg/kg		5	N.D.
Nonabromodiphenyl ether	mg/kg		5	N.D.
Decabromodiphenyl ether	mg/kg		5	N.D.

Tested by : YK Cho, HJ Kim, MB Song

Notes : mg/kg = ppm = parts per million  
< = Less than  
N.D. = Not detected (<MDL)  
MDL = Method detection limit

This Test Report is issued by the Company subject to its Terms and Conditions of Business printed overleaf. Attention is drawn to the limitations of liability, indemnification and jurisdictional issues defined therein. This Test Report shall not be reproduced, except in full, without prior written consent of the Company.

Intertek Testing Services Korea Ltd.

Seoul Office: Tel : 02-6090-9500 Fax : 02-3409-0026 Daegu Office : Tel : 053-600-8647 Fax : 053-600-8645 Web Site : [www.Intertek.co.kr](http://www.Intertek.co.kr)  
Seoul Lab. Address : 1/F, A-ju Digital Tower, #284-56, Seongsu 2-ga, Seongdong-Gu, Seoul, 133-833 Korea  
Ulsan Lab. Address : #340-2, Yongam-Ri, Chongryang-Myun, Ulsan-Gun, Ulsan 689-865 Korea

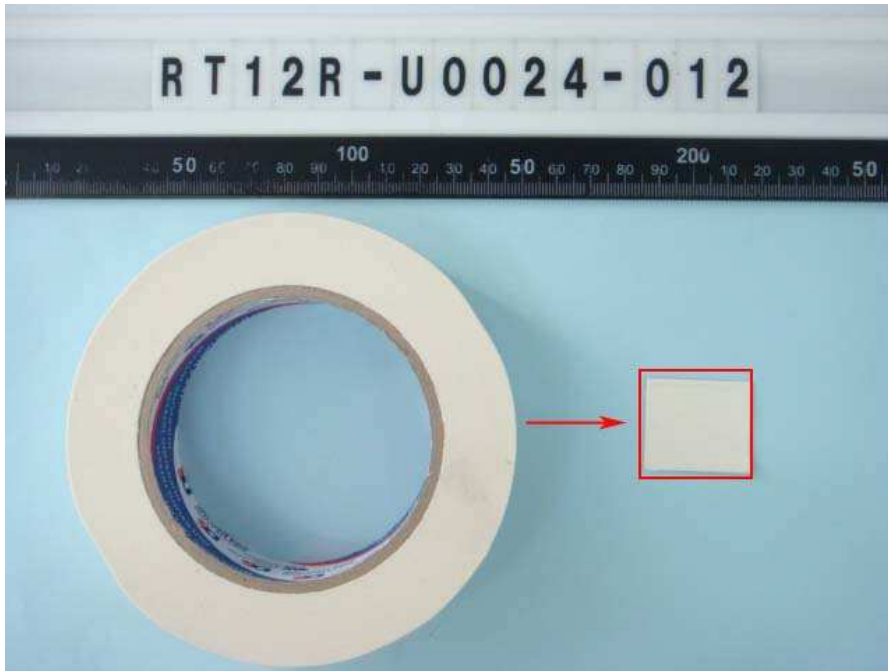
# TEST REPORT

Report No. RT12R-U0024-012-E

Sample ID No. : RT12R-U0024-012

Sample Description : Acetate Adhesive Tape

\* View of sample as received;-



This Test Report is issued by the Company subject to its Terms and Conditions of Business printed overleaf. Attention is drawn to the limitations of liability, indemnification and jurisdictional issues defined therein. This Test Report shall not be reproduced, except in full, without prior written consent of the Company.

**Intertek Testing Services Korea Ltd.**

Seoul Office: Tel : 02-6090-9500 Fax : 02-3409-0026 Daegu Office : Tel : 053-600-8647 Fax : 053-600-8645 Web Site : [www.Intertek.co.kr](http://www.Intertek.co.kr)

Seoul Lab. Address : 1/F, A-ju Digital Tower, #284-56, Seongsu 2-ga, Seongdong-Gu, Seoul, 133-833 Korea

Ulsan Lab. Address : #340-2, Yongam-Ri, Chongryang-Myun, Ulju-Gun, Ulsan 689-865 Korea



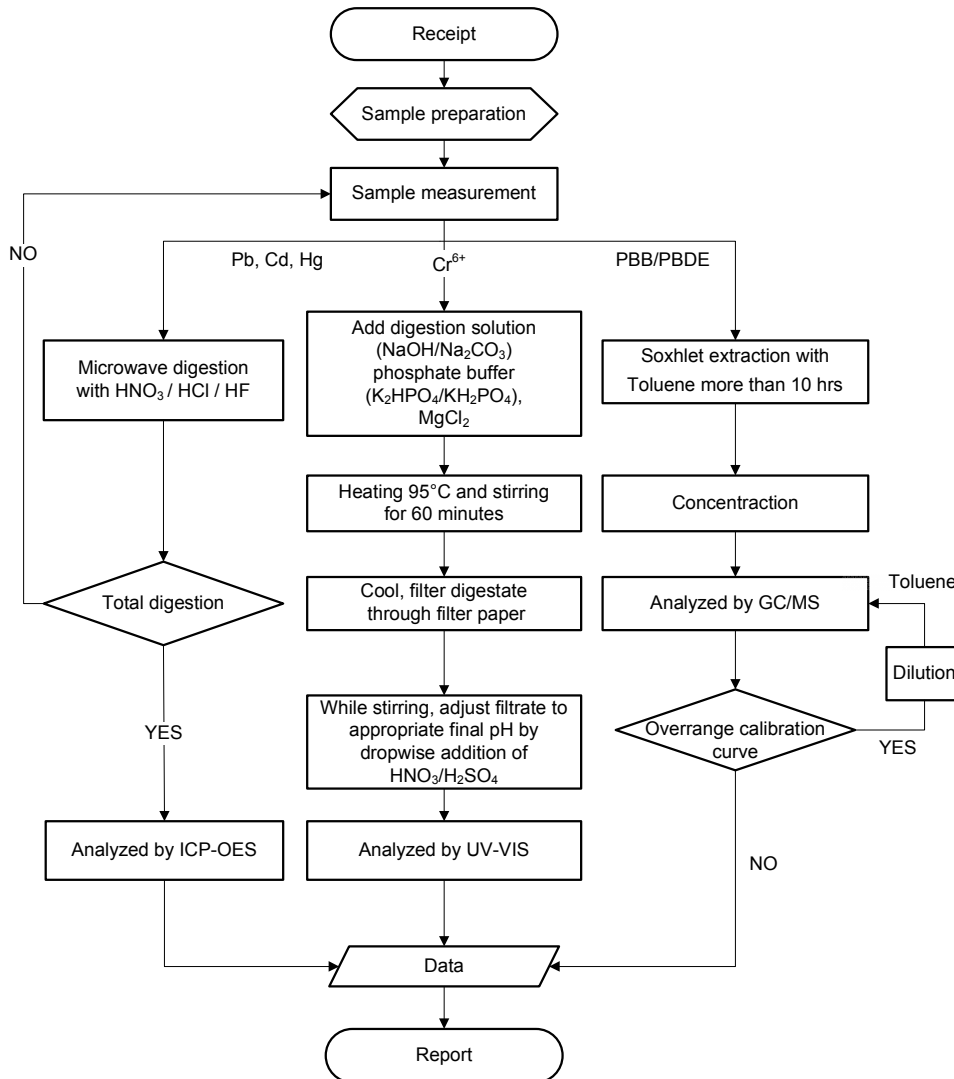
# TEST REPORT

Report No. RT12R-U0024-012-E

Sample ID No. : RT12R-U0024-012

Sample Description : Acetate Adhesive Tape

**Flow Chart**  
( EPA 3052 for Cd, Pb, Hg / EPA 3060A for Cr<sup>6+</sup> / EPA 3540C for PBB/PBDE )



\*\* Remarks : The samples were dissolved totally by pre-conditioning method according to above flow chart.

\*\*\*\*\* End of Report \*\*\*\*\*

This Test Report is issued by the Company subject to its Terms and Conditions of Business printed overleaf. Attention is drawn to the limitations of liability, indemnification and jurisdictional issues defined therein. This Test Report shall not be reproduced, except in full, without prior written consent of the Company.

Intertek Testing Services Korea Ltd.